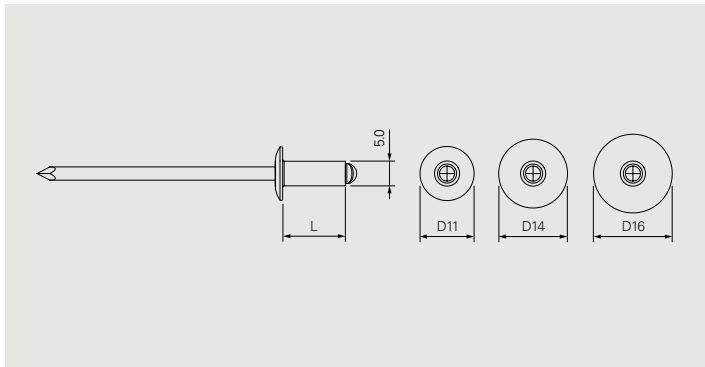
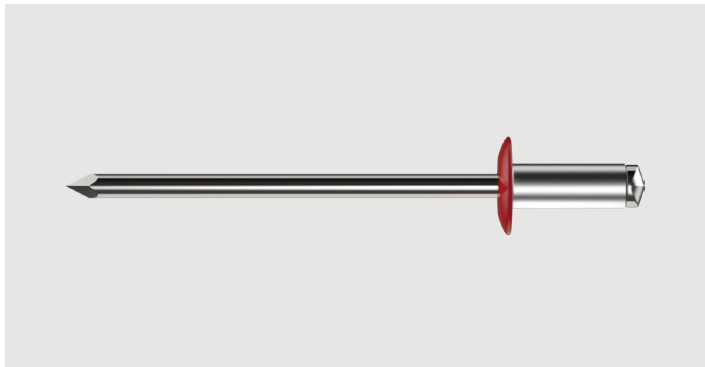


AP-5.0



Application

Fastening of cladding panel to aluminium profile

Component 1 (t _i)	Component 2 (t _{ii})	
Cladding panel	Aluminium	≥1.0
	Pre-drill Ø	5.1

Fastener material

Body: Aluminium AlMg5
Mandrel: Austenitic stainless steel A2

Approvals

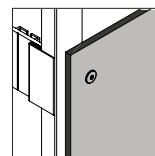
ETA-21/0951

Features and Benefits

- Blind rivet suitable for installation of pre-drilled cladding panels onto pre-drilled aluminium structure
- High clamping range with clamping force independent of the clamping thickness
- Non-detachable and vibration-resistant connection

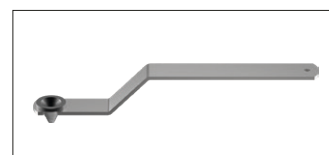
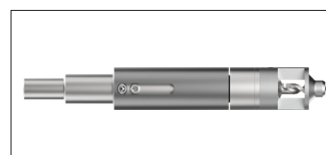
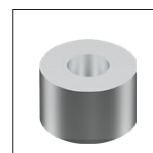
Documentation

Approval document (ETA)



Blind rivet in aluminium onto aluminium

Product code	PU	L	CL	Head	Blank	Coloured
AP11-50120-S	250	12	2.0–8.0	D11	995901	1363826
AP11-50180-S		18	7.0–13.5	D14	883751	1363851
AP14-50120-S		12	2.0–8.0		941481	1363853
AP14-50160-S		16	6.0–12.0		1127413	1363854
AP14-50180-S		18	7.0–13.5		851318	1363855
AP14-50210-S		21	10.0–16.0		1586734	1363856
AP14-50230-S		23	12.0–18.0		–	1363857
AP16-50120-S		12	2.0–8.0	D16	1656044	1648414
AP16-50160-S		16	6.0–12.0		914963	1363858
AP16-50180-S		18	7.0–13.5		870920	1363859
AP16-50210-S		21	10.0–16.0		994642	1363861



Accessories/Ancillaries

Product code	PU	Pre-drill Ø panel	
AccuBird®Pro	1	–	1679661
FP-A Sleeves	–		–
NOSEPIECE-MOVING-POINT AP/ASO	1		974620
DG-146×20-7,0		7.0–7.9	1320657
DG-146×20-8,0		8.0–8.9	1320658
DG-146×20-9,0		9.0–9.9	1320659
DG-146×20-10,0		10.0–10.9	1321704
ZL-5,1/7-18		7.0–18.0	701532